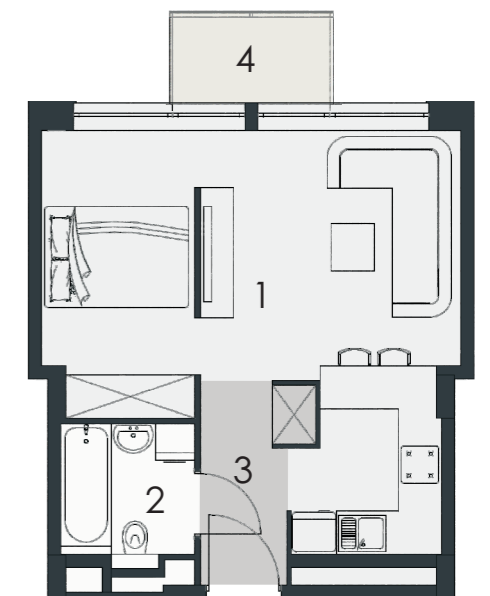
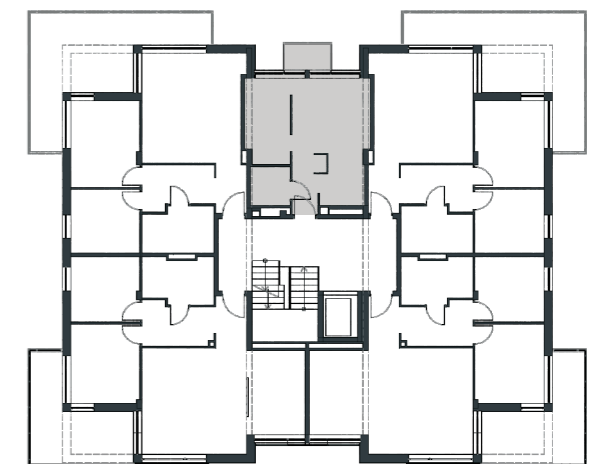


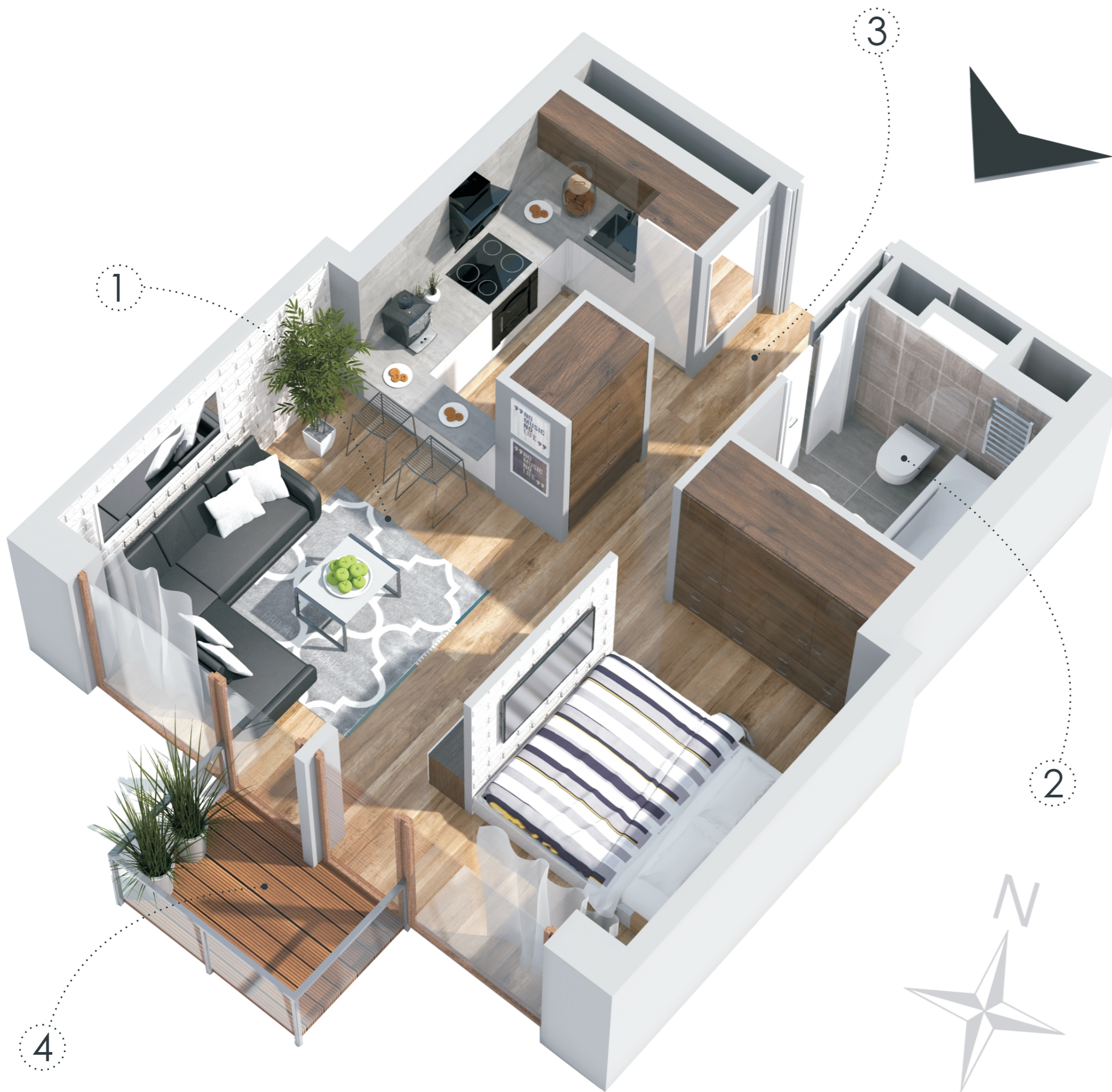
# VERANDA PARK

APARTAMENT NR  
32,26m<sup>2</sup>  
I PIĘTRO

# 8



1 salon + kuchnia	25,31m <sup>2</sup>
2 łazienka	3,33m <sup>2</sup>
3 hol	3,62m <sup>2</sup>
4 taras	2,66m <sup>2</sup>



BIURO SPRZEDAŻY: Łomża, ul. Zawadzka 42, tel.: 733 88 44 33, e-mail: [biuro@verandapark.pl](mailto:biuro@verandapark.pl)

GRODZKI  
DEVELOPMENT