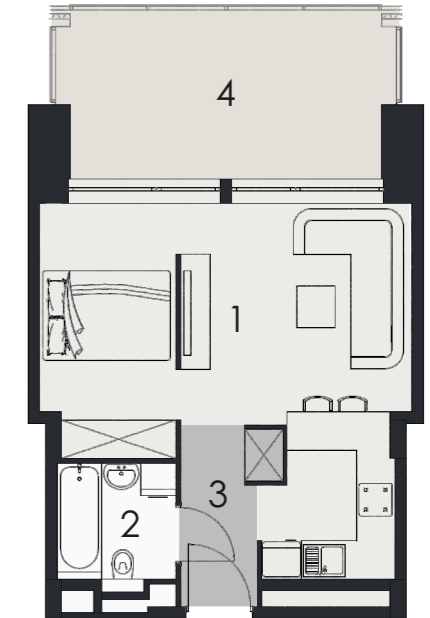
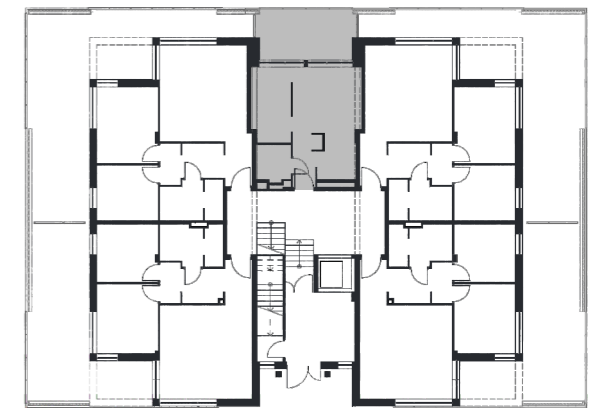


VERANDA PARK

APARTAMENT NR
32,26m²
PARTER

3



| | |
|-------------------|---------------------|
| 1 salon + kuchnia | 25,31m ² |
| 2 łazienka | 3,33m ² |
| 3 hol | 3,62m ² |
| 4 taras | 13,11m ² |

BIURO SPRZEDAŻY: Łomża, ul. Zawadzka 42, tel.: 733 88 44 33, e-mail: biuro@verandapark.pl

GRODZKI
DEVELOPMENT