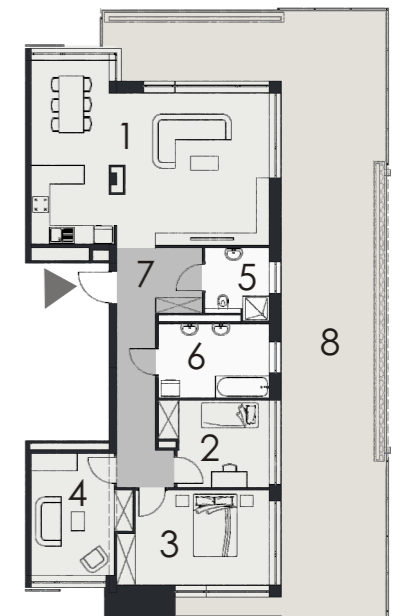
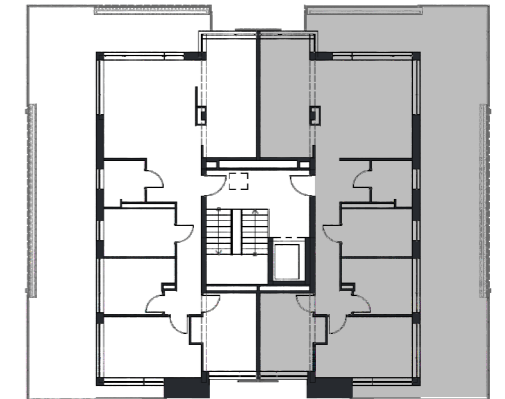
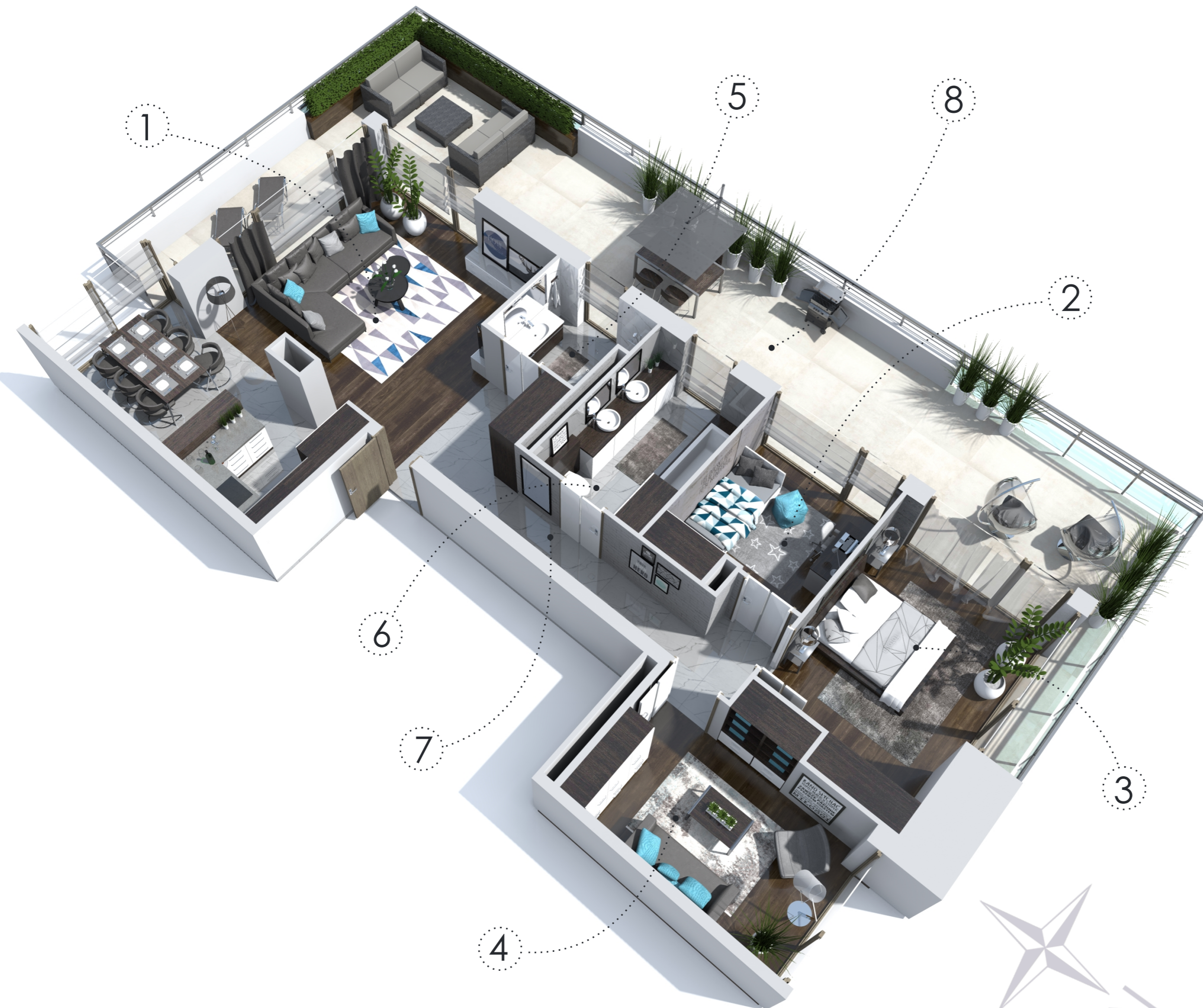


# VERANDA PARK

APARTAMENT NR  
98,29m<sup>2</sup> **23**  
V PIĘTRO



1 salon + kuchnia	38,76m <sup>2</sup>
2 pokój	8,80m <sup>2</sup>
3 pokój	13,70m <sup>2</sup>
4 pokój	10,98m <sup>2</sup>
5 łazienka	4,36m <sup>2</sup>
6 łazienka	8,23m <sup>2</sup>
7 hol	13,39m <sup>2</sup>
8 taras	72,10m <sup>2</sup>



BIURO SPRZEDAŻY: Łomża, ul. Zawadzka 42, tel.: 733 88 44 33, e-mail: [biuro@verandapark.pl](mailto:biuro@verandapark.pl)

**GRODZKI**  
DEVELOPMENT