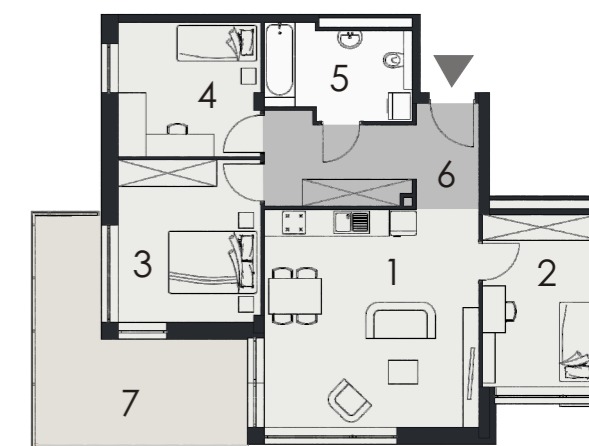


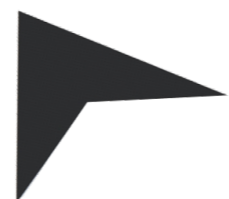
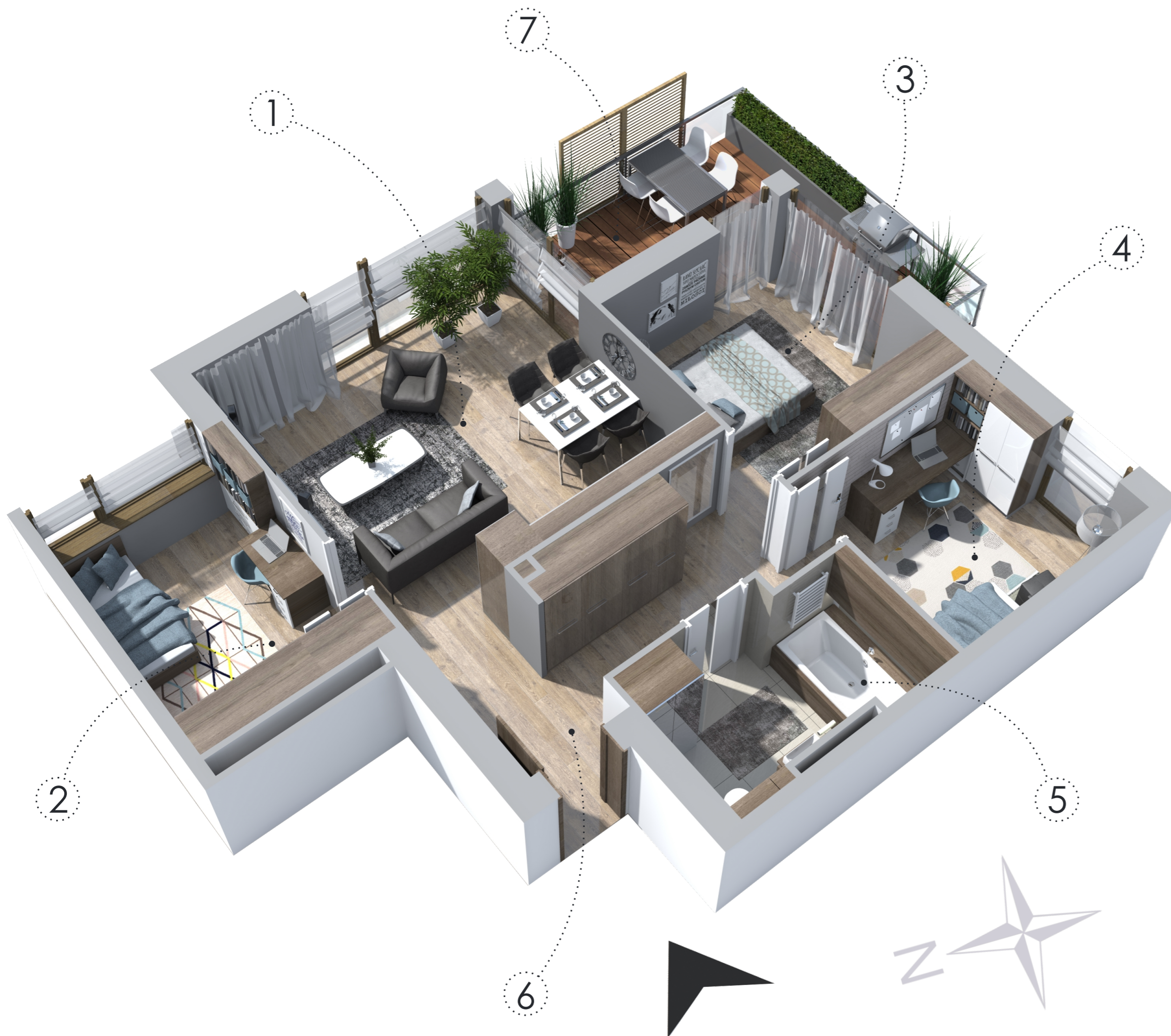
VERANDA PARK

APARTAMENT NR
71,62m²
II PIĘTRO

14



| | |
|-------------------|---------------------|
| 1 salon + kuchnia | 23,64m ² |
| 2 pokój | 10,57m ² |
| 3 pokój | 11,65m ² |
| 4 pokój | 9,56m ² |
| 5 łazienka | 6,49m ² |
| 6 hol | 9,71m ² |
| 7 taras | 15,00m ² |



BIURO SPRZEDAŻY: Łomża, ul. Zawadzka 42, tel.: 733 88 44 33, e-mail: biuro@verandapark.pl

GRODZKI
DEVELOPMENT