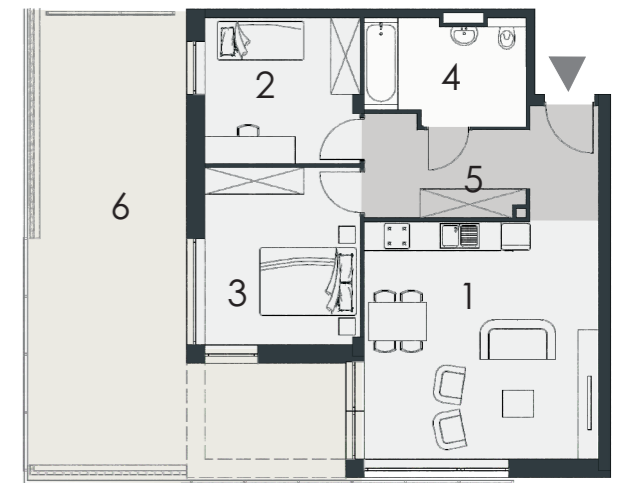
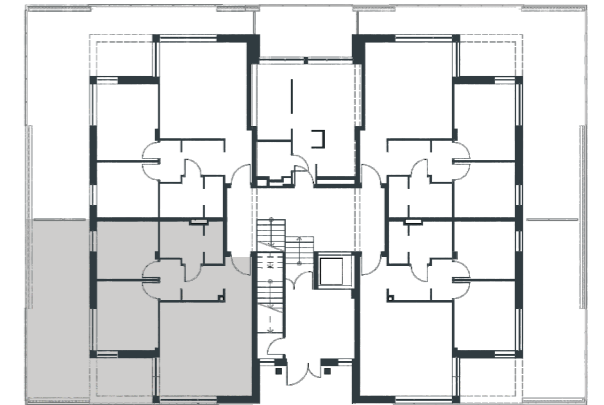


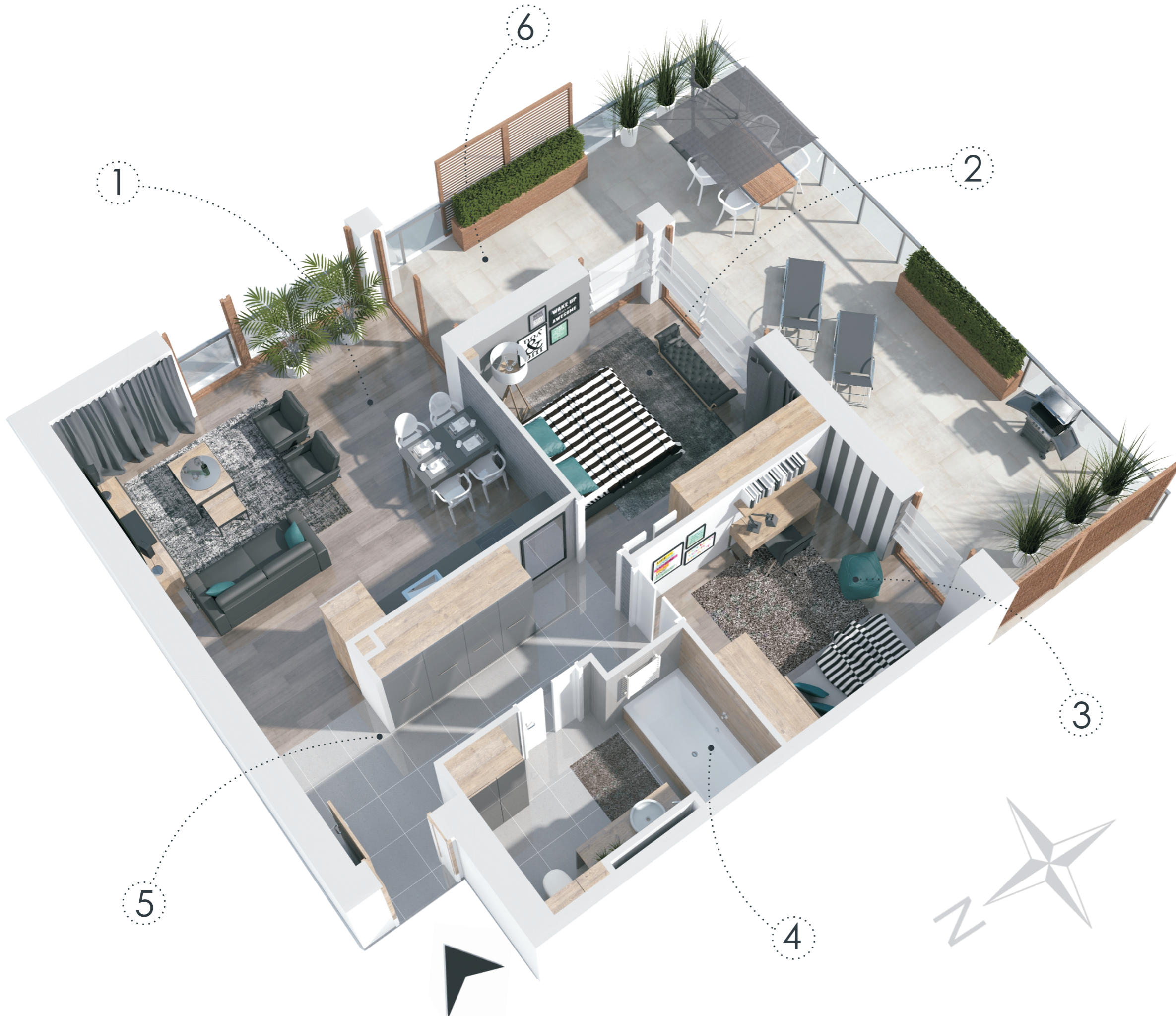
VERANDA PARK

APARTAMENT NR
61,34m²
PARTER

5



1 salon + kuchnia	23,69m ²
2 pokój	11,65m ²
3 pokój	9,56m ²
4 łazienka	6,73m ²
5 hol	9,71m ²
6 taras	36,89m ²



BIURO SPRZEDAŻY: Łomża, ul. Zawadzka 42, tel.: 733 88 44 33, e-mail: biuro@verandapark.pl

GRODZKI
DEVELOPMENT