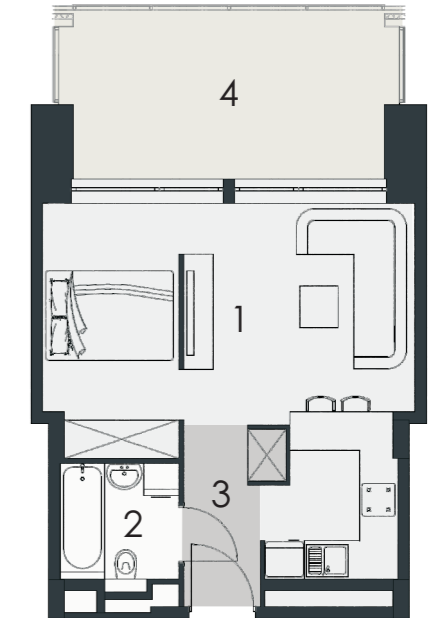
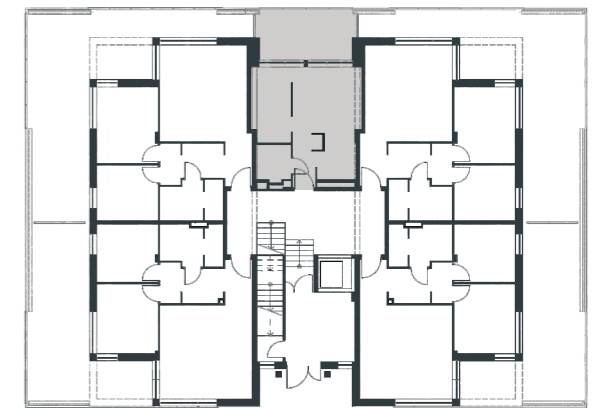


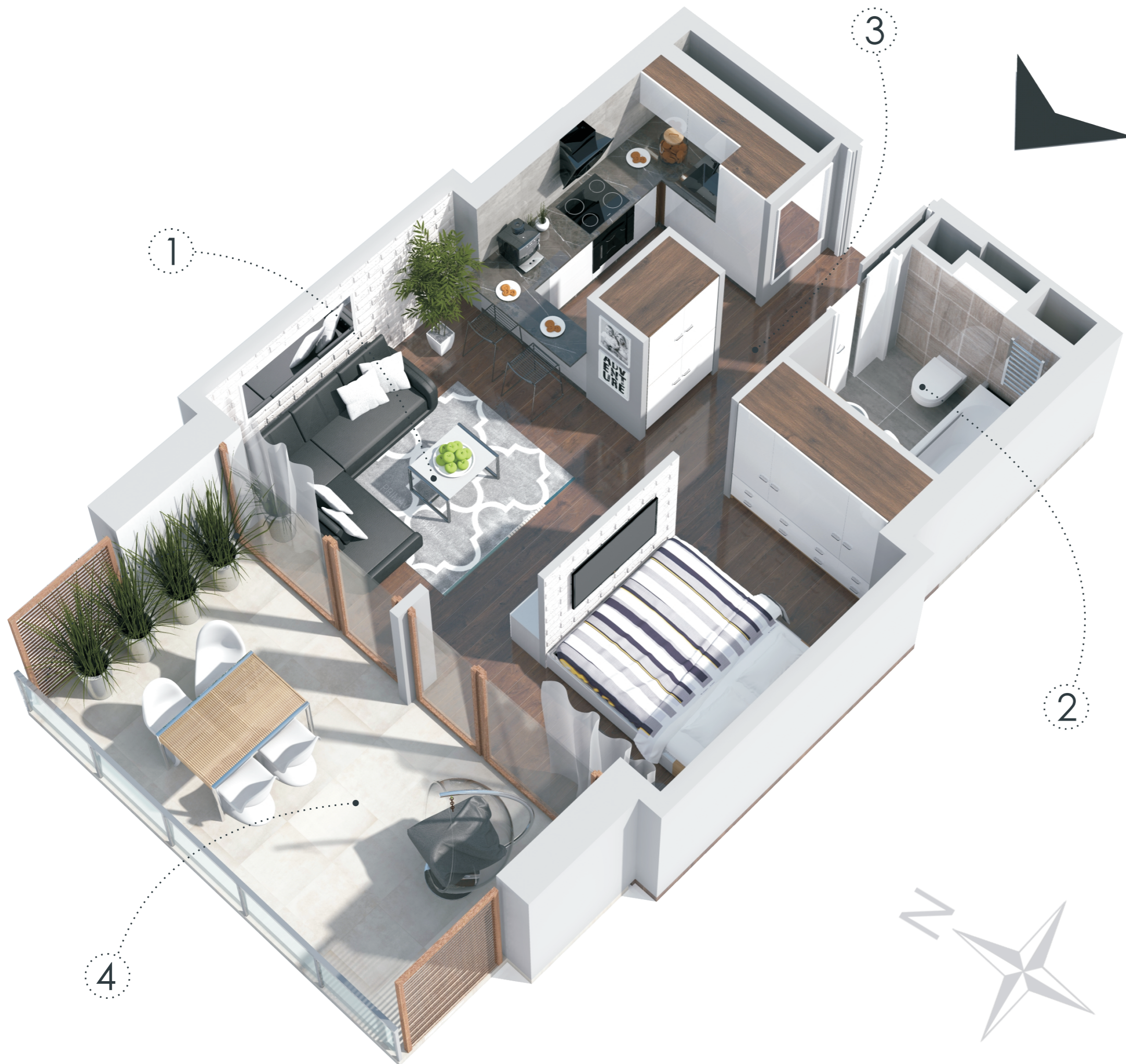
VERANDA PARK

APARTAMENT NR
32,26m²
PARTER

3



1 salon + kuchnia	25,31m ²
2 łazienka	3,33m ²
3 hol	3,62m ²
4 taras	13,11m ²



BIURO SPRZEDAŻY: Łomża, ul. Zawadzka 42, tel.: 733 88 44 33, e-mail: biuro@verandapark.pl

GRODZKI
DEVELOPMENT